



## Deaths registered weekly in Guernsey, provisional: week ending 18<sup>th</sup> April 2020

Provisional counts of the number of deaths registered in Guernsey, including deaths involving the coronavirus (COVID-19), in the latest weeks for which data are available.

READER INFORMATION	
Title	Deaths registered weekly in Guernsey, provisional: week ending 18 <sup>th</sup> April 2020  Provisional counts of the number of deaths registered in Guernsey, including deaths involving the coronavirus (COVID-19), in the latest weeks for which data are available
Document purpose and key uses	To review the impact of the COVID-19 pandemic on death registration counts in Guernsey up to week 16 of 2020 (week ending 18 <sup>th</sup> April)
Publication date	24 <sup>th</sup> April 2020
Target audience	Public
Circulation list	Director of Public Health, for onward circulation
Data sources	Death Registrations, Guernsey Greffe
Reporting frequency	Ad hoc
Accuracy	Considered accurate on data available
Completeness	Sensitive to the assumption that all deaths have been registered within the 5-day registration window
Value types	Counts, ranges
Author	J Cataroche
Produced for	Director of Public Health

## Deaths registered weekly in Guernsey, provisional: week ending 18<sup>th</sup> April 2020

### *Summary*

*As a result of COVID-19 mortality, the number of deaths registered in Guernsey during week 15 of 2020 exceeded the ten-year average for the same week in the period 2001–19. When COVID-19 deaths were excluded, no residual excess mortality was observed for weeks up to and including week 16 of 2020.*

Details of deaths registered in Guernsey from 01/01/2010 to 18/04/20 were extracted by the Health Intelligence Unit, Public Health Services, on 23/04/20<sup>1</sup>. These were examined to determine the impact of the on-going COVID-19 pandemic on local death registrations for deaths from all causes.

The first death from COVID-19 occurred in Guernsey during week 13 and was registered in week 14. Therefore it is weeks 14 to 16 (Table 1, shaded) where one would expect the impact of COVID-19 mortality to be seen.

**Table 1. Death registrations in Guernsey during weeks 1–16 of 2020, with comparison figures from 2010–19.**

Week number	2020 (all causes)	2020 (excluding COVID-19 and 'possible/probable' COVID-19)	Average all-cause registrations in the 10 years 2010–19 (range)
1	6	6	8 (0–14)
2	13	13	13 (7–23)
3	11	11	13 (4–19)
4	9	9	13 (7–23)
5	8	8	13 (7–20)
6	7	7	12 (5–19)
7	12	12	10 (6–15)
8	14	14	13 (6–20)
9	11	11	11 (6–17)
10	11	11	9 (6–21)
11	12	12	9 (4–16)
12	10	10	12 (5–19)
13	9	9	11 (6–14)
14	12	9	12 (7–19)
15	20	13	12 (7–20)
16	8	5	11 (5–18)

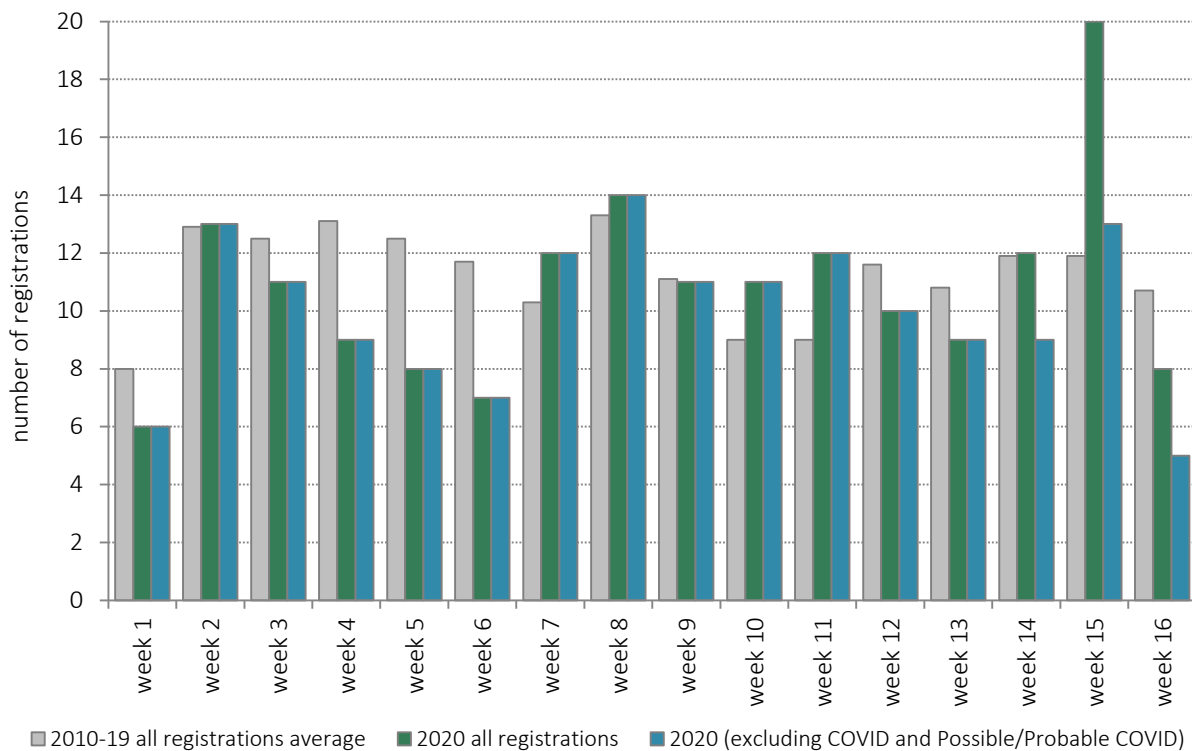
Numbers of all-cause registrations during 2020 were close to or lower than the ten-year average for weeks 14 and 16. In week 15, however, the count of registrations ( $n=20$ ) exceeded the ten-year average (Figure 1, week 15 green bar) and was at the top of the range of values seen in single years between 2010 and 2019 (Table 1). This is likely to reflect excess mortality during 2020 due to COVID-19.

### **Mortality from non-COVID-19 causes**

Excess mortality from other causes could potentially have occurred as a secondary, indirect effect of the COVID-19 pandemic, i.e. in the event that there had been reduced access to timely medical care for other conditions.

<sup>1</sup> Source: Guernsey Greffe Registrations.

To investigate this, death registrations relating to COVID-19 or ‘possible/probable’ COVID-19 were removed and the remaining registration counts examined. With COVID-19 deaths removed registration counts were found to be in line with, or lower than, average weekly registration counts for the previous ten years (Figure 1, weeks 14–16 blue bars). This suggests there has been no adverse impact on all-cause mortality to date.



**Figure 1. Weekly Guernsey death registrations during 2020 and 2010–19.**

As the pandemic continues further monitoring will allow these findings to be kept under review.