

If you feel unwell
Please stay at home
and get in touch

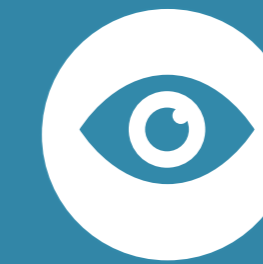
While we wait for the
briefing to start it's a
good time to remind
ourselves about
symptoms



A fever



Loss of smell
or taste



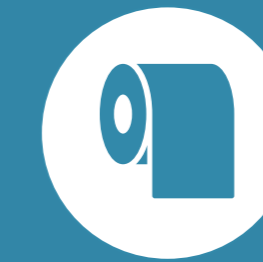
Conjunctivitis



Aches and
Pains (recent
onset)



A new
persistent
cough



Diarrhoea



Tiredness
(recent onset)



Sore throat



A rash on skin, or
discolouration of
fingers or toes (call
your GP today for
clinical assessment)



Difficulty
breathing or
shortness of
breath (call 999)



Chest pain
or pressure
(call 999)



Loss of speech or
movement
(call 999)



States of Guernsey
Public Health Services

*Together we are
stronger*

#GuernseyTogether #Winter2020

[Gov.gg/coronavirus](https://www.gov.gg/coronavirus)



Coronavirus Media briefing

17th February 2021

Subtitles are available for this media briefing. If you require subtitles please ensure you activate them on the device you are using.



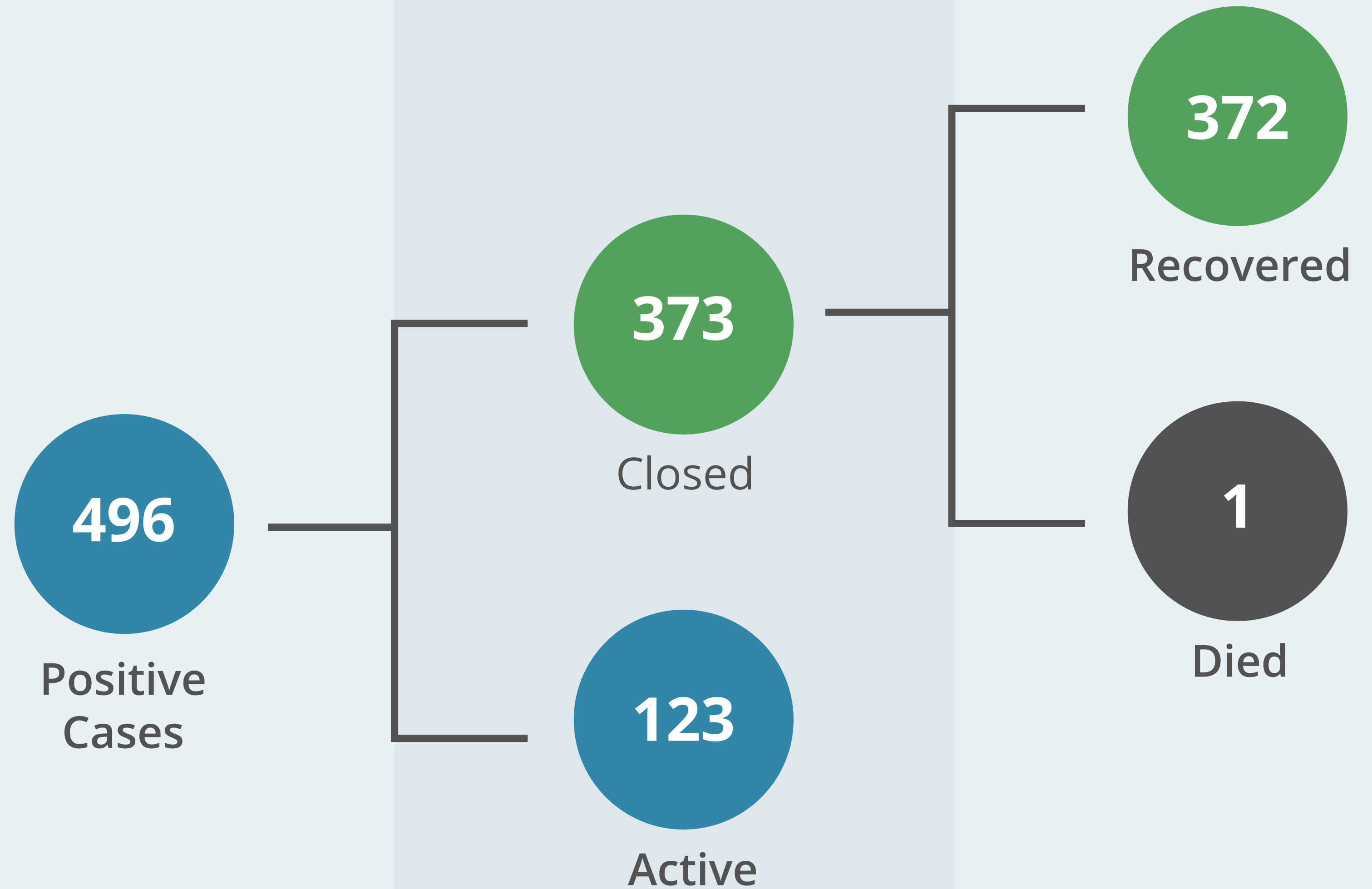
States of Guernsey
Public Health Services

*Together we are
stronger*
#GuernseyTogether #Winter2020

Gov.gg/coronavirus

COVID-19 Case Summary

22 January 2021
until present



COVID-19 Case breakdown

*Identified as a contact of a case

**Identified through source tracing

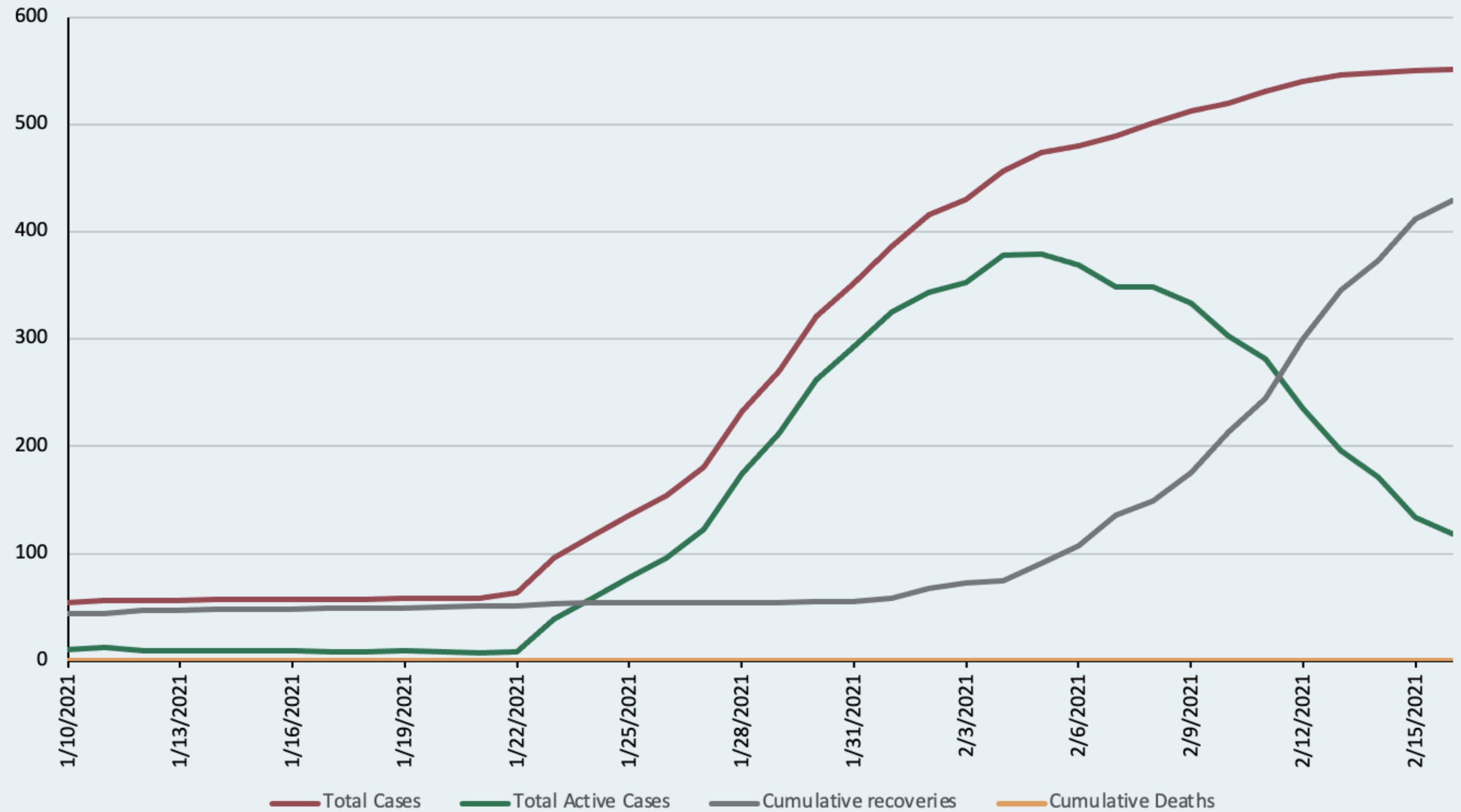
***Identified through planned workforce screening, community or other source



Case Breakdown

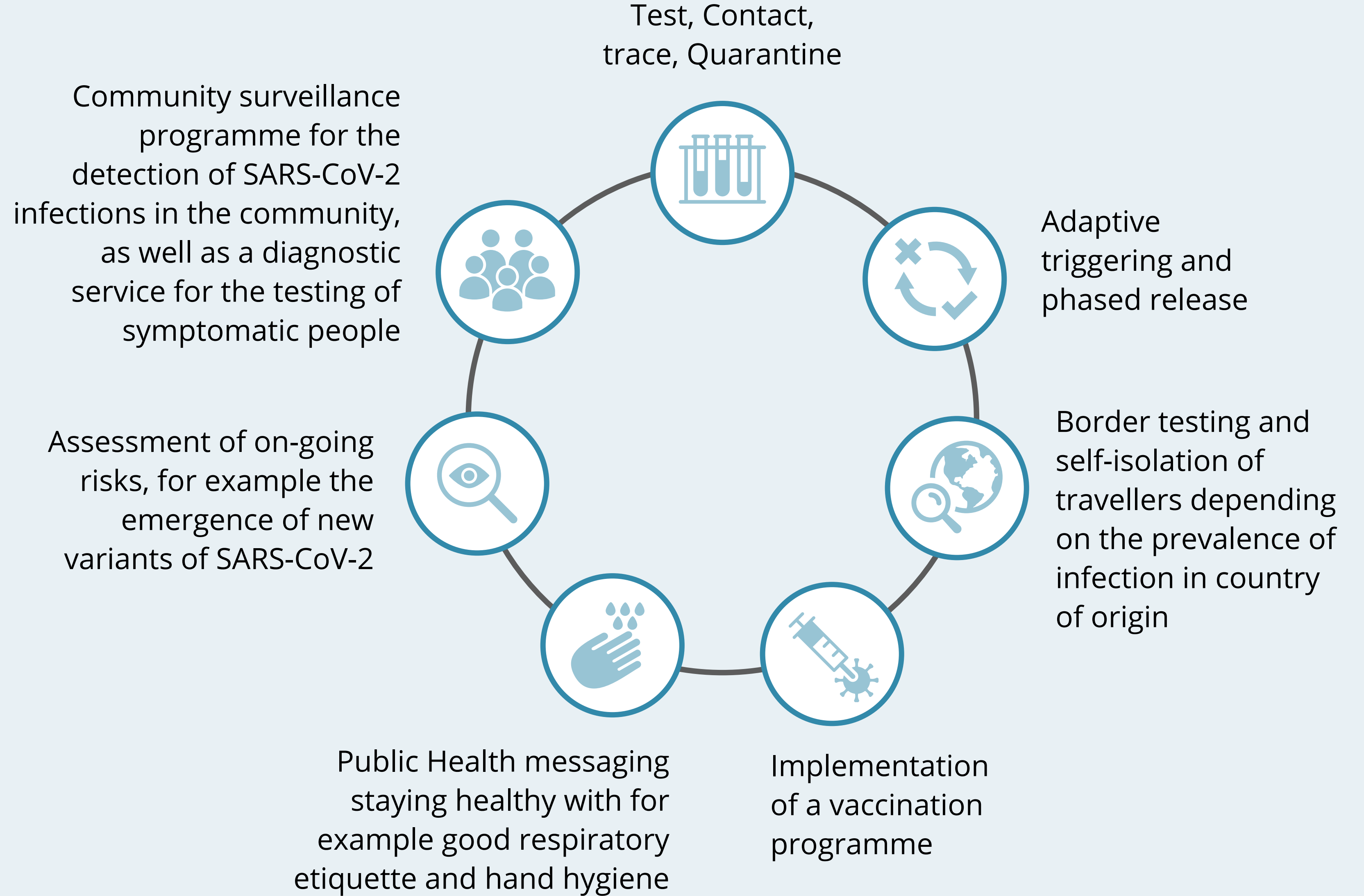
Date	Number of cases identified	Case attribution
Thursday 11 th	12	1 travel 1 unknown community source 9 contacts 1 care home Staff*
Friday 12 th	7	1 unknown community source 6 contacts
Saturday 13 th	8	1 planned workforce screening*** 6 contacts 1 travel
Sunday 14 th	4	1 unknown community source** 3 contacts
Monday 15 th	3	2 planned workforce screening*** 1 contact
Tuesday 16 th	2	1 unknown community source 1 contact

COVID-19 Second Wave: COVID-19 Summary over time



COVID-19

Approach to Exit from Lockdown



COVID-19 Enhanced Surveillance Programme as an exit enabler



Hospital and healthcare



Other, for example

- ✓ Staff in isolation hotels
- ✓ Taxi and bus drives
- ✓ Care and residential home staff
- ✓ Teachers
- ✓ Police
- ✓ Delivery drivers



Targetted testing

- ✓ Staff and pupils currently in school
- ✓ Other groups, for example takeaways services