

**If you feel unwell**  
Please stay at home  
and get in touch

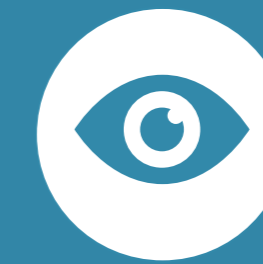
While we wait for the  
briefing to start it's a  
good time to remind  
ourselves about  
symptoms



A fever



Loss of smell  
or taste



Conjunctivitis



Aches and  
Pains (recent  
onset)



A new  
persistent  
cough



Diarrhoea



Tiredness  
(recent onset)



Sore throat



A rash on skin, or  
discolouration of  
fingers or toes (call  
your GP today for  
clinical assessment)



Difficulty  
breathing or  
shortness of  
breath (call 999)



Chest pain  
or pressure  
(call 999)



Loss of speech or  
movement  
(call 999)



States of Guernsey  
Public Health Services

*Together we are  
stronger*

#GuernseyTogether #Winter2020

[Gov.gg/coronavirus](https://gov.gg/coronavirus)



# Coronavirus Media briefing

**19th February 2021**

Subtitles are available for this media briefing. If you require subtitles please ensure you activate them on the device you are using.



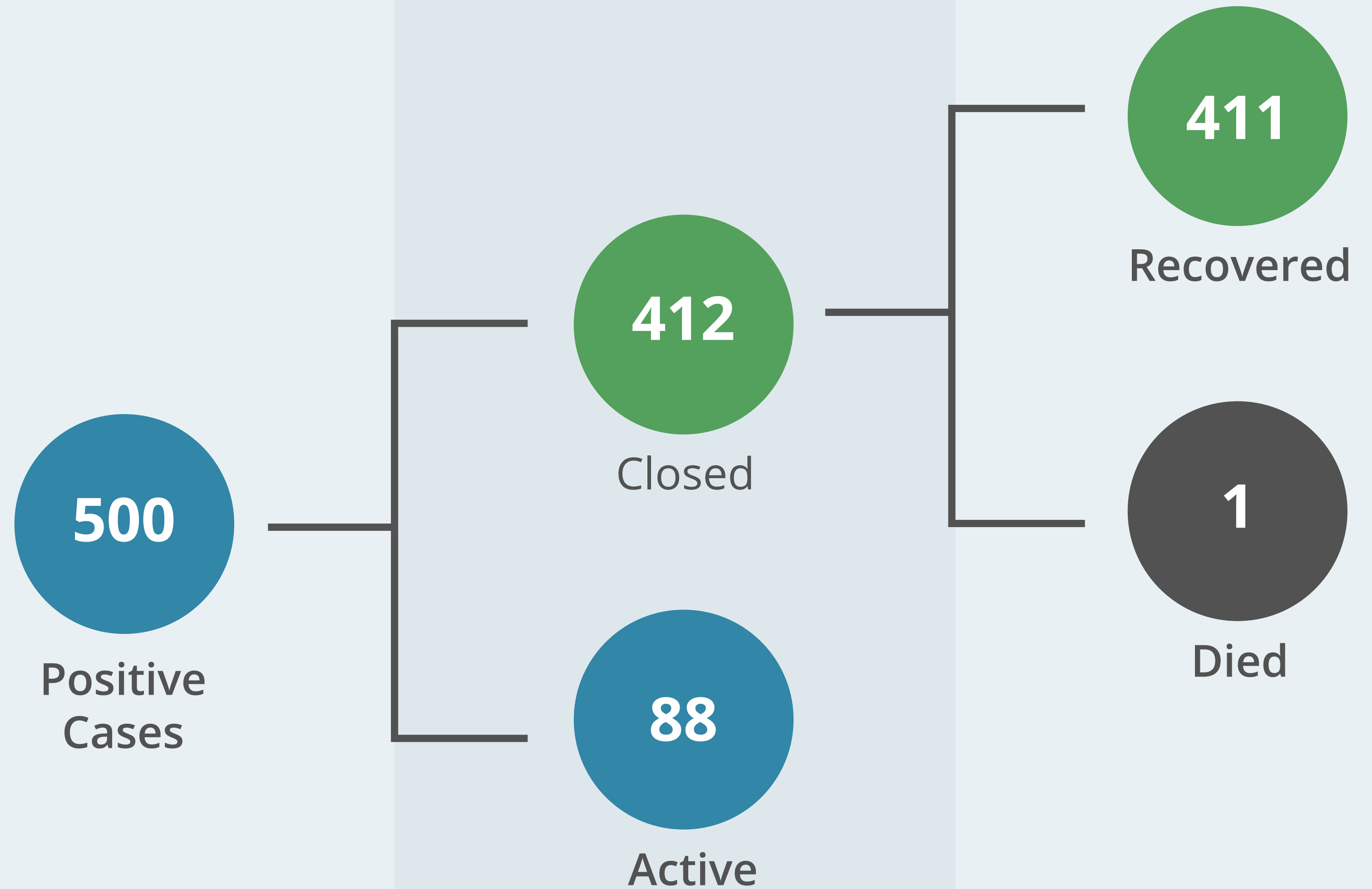
States of Guernsey  
Public Health Services

*Together we are  
stronger*  
#GuernseyTogether #Winter2020

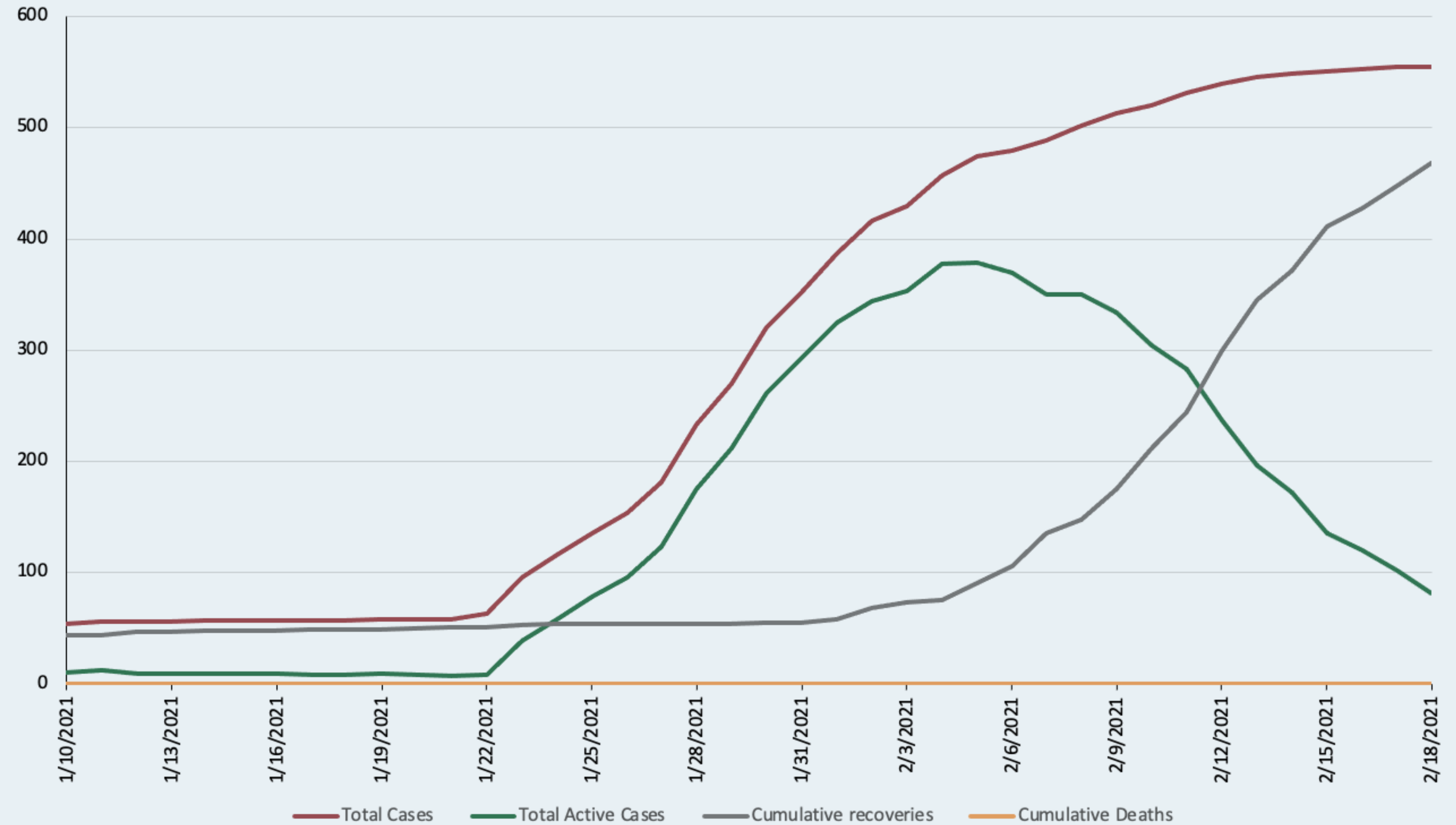
**[Gov.gg/coronavirus](https://www.gov.gg/coronavirus)**

# COVID-19 Case Summary

22 January 2021  
until present



# COVID-19 Second Wave: COVID-19 Summary over time



# COVID-19 Case breakdown

\*Identified as a contact of a case

\*\*Identified through source tracing

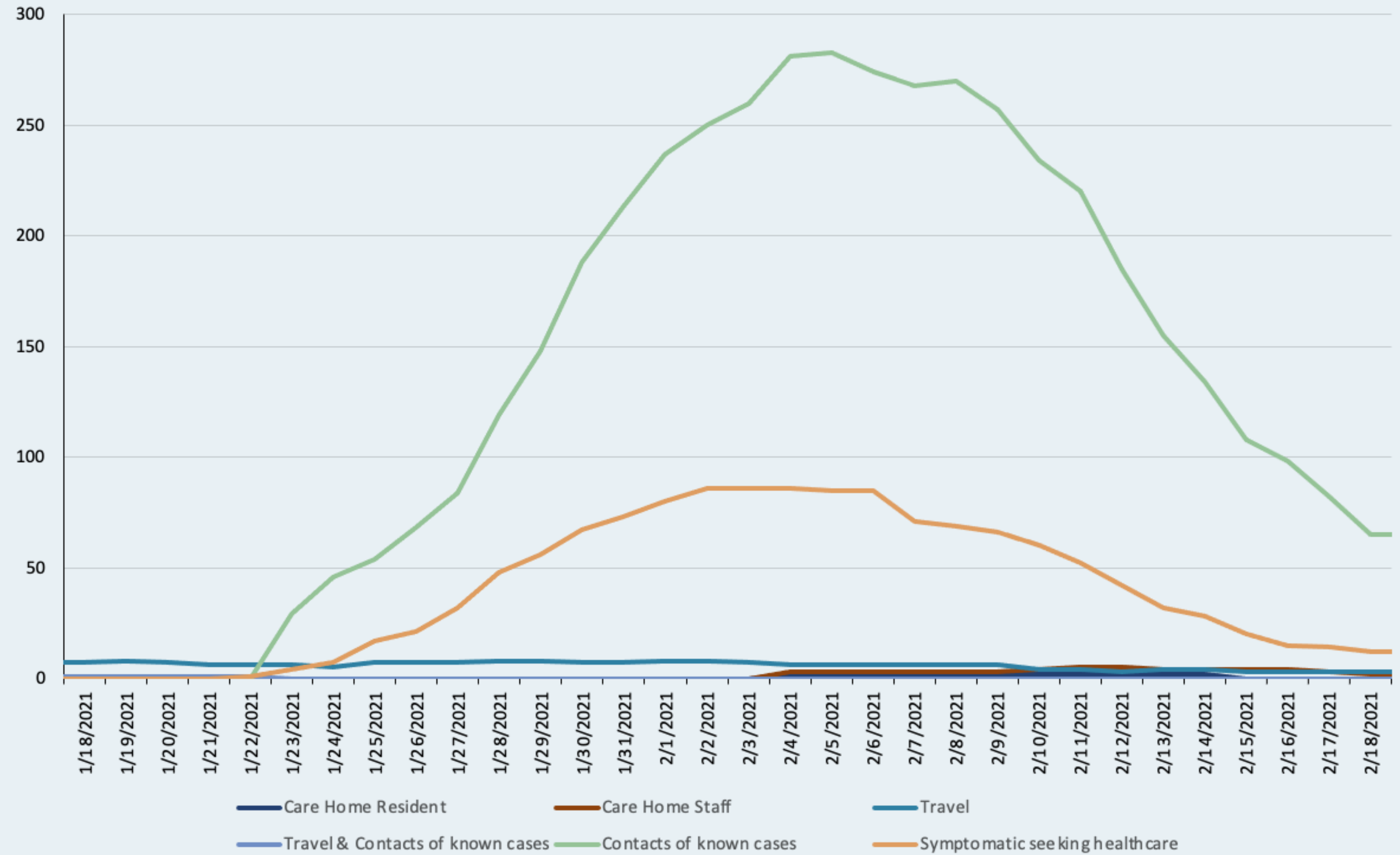
\*\*\*Identified through planned workforce screening, community or other source



## Case Breakdown

Date	Number of cases identified	Case attribution
Sunday 14 <sup>th</sup>	4	1 unknown community source** 3 contacts
Monday 15 <sup>th</sup>	3	2 planned workforce screening*** 1 contact
Tuesday 16 <sup>th</sup>	2	1 unknown community source 1 contact
Wednesday 17 <sup>th</sup>	2	2 contact
Thursday 18 <sup>th</sup>	2	1 planned workforce screening*** 1 contact

# COVID-19 Cases attribution over time



COVID-19  
**Vaccine Update:  
Doses given in  
all settings  
up to 14<sup>th</sup> Feb**

**Total no. of doses**

**19,284**

**Total no. of first  
dose vaccinations**

**13,950**

**Total no. of second  
dose vaccinations**

**5,334**

**Doses per 100  
people in population**

**29.5**

# COVID-19 'Long COVID'



## Acute COVID-19 infection

Signs and symptoms of COVID-19 up to 4 weeks



## On-going symptomatic COVID-19

Signs and symptoms of COVID-19 present from 4-12 weeks



## Post COVID-19 syndrome

Signs and symptoms that develop during or after an acute infection and are present for more than 12 weeks, with no other diagnosis



# COVID-19 'Long COVID'



**Likelihood not related to the severity of infection**



**Most common symptoms are fatigue and breathlessness**



**But symptoms can be singular, multiple, fluctuation**

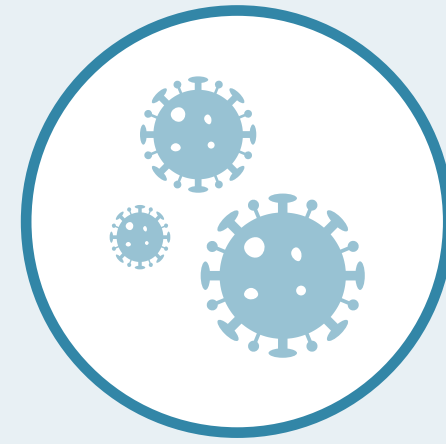


**Approach in Guernsey being developed**

- Assessment by GP may include blood tests and referral for a chest x-ray
- Referral to specialist care for specific complication

# COVID-19 Release Triggers between stages

Stage 1:  
Good to go



No new clusters of infections or individual cases of infection that cannot be controlled by 'Test, Track and Isolate'



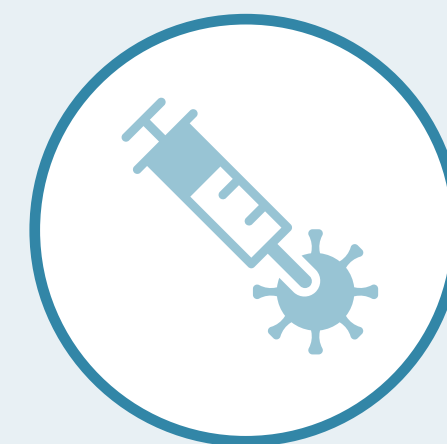
Adequate hospital, community, emergency and primary care capacity



Continued local testing



Surveillance programme



Continued roll-out of vaccine



Public adherence