

## Condor COVID Animal Transfer Process

### DELIVERY Vehicle

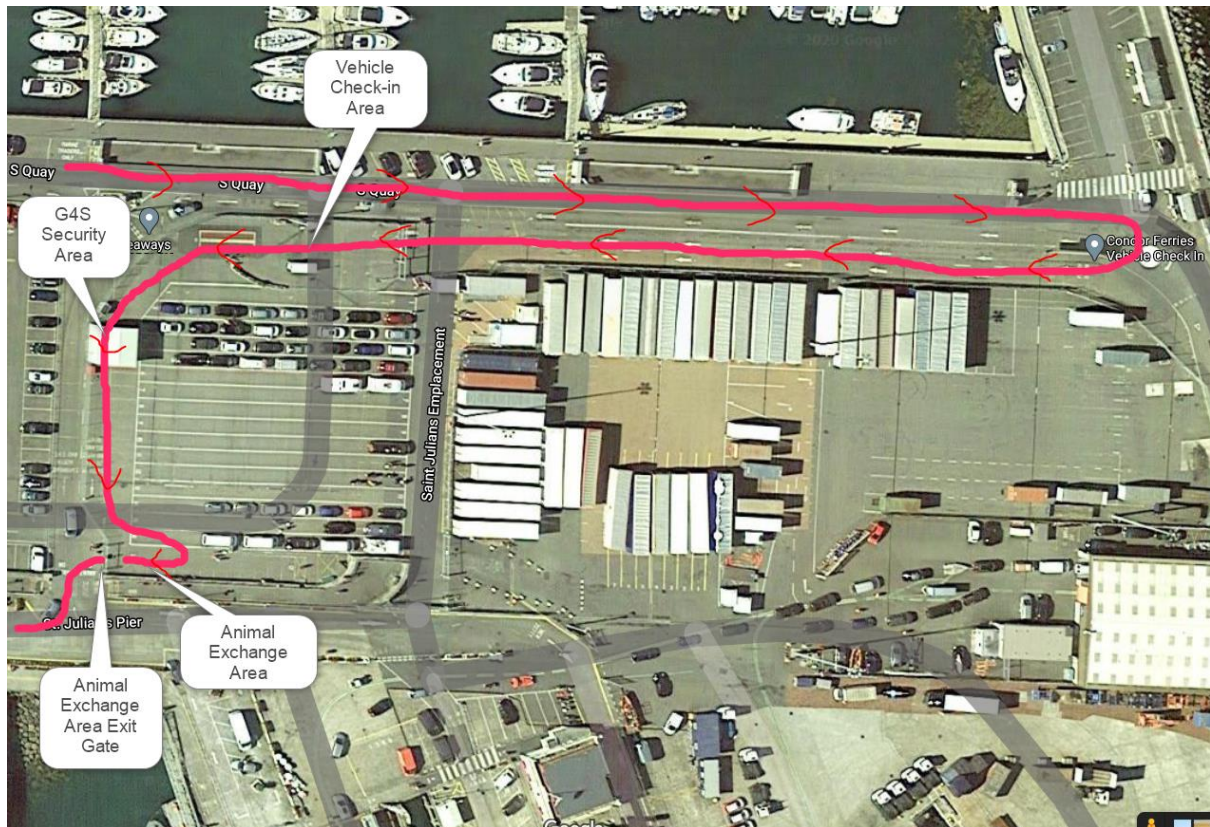


The above map outlines the direction of travel for all pet/horse transfers being exchanged in Guernsey where the delivering vehicle is discharging and re-boarding the same vessel.

The delivery driver must follow the above route, firstly through customs control and the Covid-19 control area, once they have been cleared they must proceed direct to the vehicle check-in area and check-in for their outbound journey and inform Condor staff that they will be carrying out an animal exchange, they will be advised of the lane they are required to park in once they have completed the animal exchange, they must then present themselves to the Security area for inspection prior to parking in the animal exchange area facing the opposite direction of the receiving vehicle ready for the animal transfer, they must not exit their vehicle at any time during the transfer, once transfer has been completed they must then proceed to

the lane number previously advised by Condor staff member and await re-boarding instructions for return travel, both parties must be wearing facemasks and adhere to a minimum 2 metre social distance range throughout the process.

## **RECEIVING Vehicle**



The above map outlines the direction of travel for all pet/horse transfers being exchanged in Guernsey where the receiving vehicle will enter the vehicle check-in area to await transfer process.

Collectors must ensure they are in position facing the exit gate prior to the arrival of the incoming vessel. They must firstly report to the check-in staff showing a current ID and state their purpose. They must then present themselves to the Security area for inspection prior to parking in the animal exchange area facing the exit gate ready for the animal transfer. On transfer the receiver must approach the stationary vehicle and perform the transfer of pet/s to their vehicle, once transfer has taken place and security are happy for them to exit, they must immediately exit through the gate.

Animal delivery driver must always remain in their vehicle and both parties must be wearing facemasks and adhere to a minimum 2 metre social distance range throughout the process.